

# Port of Southampton Pilotage Tariff 2022



# Contents

<b>1. Pilotage and service charges</b> .....	<b>2</b>
1.1 Charges for services of a pilot – General provisions .....	2
1.2 Service charge .....	2
1.4 Pilots National Pension Fund (PNPF) deficit surcharge .....	3
1.5 Administration charge.....	3
1.6 Fuel adjustment mechanism .....	3
<b>2. Additional pilotage service charges</b> .....	<b>4</b>
2.1 Attendance charge .....	4
2.2 Embarkation and disembarkation of non-ABP personnel .....	4
2.3 Cancellation charges.....	4
2.4 Choice Retainer Supplement (Container Port) and Additional Pilot Charge.....	4
2.5 Dead ship pilotage.....	5
2.6 Late notice booking charge .....	5
2.7 Overcarriage and pre-carriage of pilots.....	5
2.8 Pilotage exceeding 6 hours .....	5
2.9 Hire of a pilot launch.....	6
2.10 Safe access and egress .....	6
2.11 Services of an Assistant Pilot .....	6
2.12 Charge for vessels over 60,000 DWT .....	6
2.13 VTS acting on behalf of the point of contact or nominated agency .....	7
2.14 Compass Adjuster .....	7
<b>3. Pilotage exemption certificates (PEC)</b> .....	<b>7</b>
3.1 Acts of self-pilotage .....	7
3.2 Examinations.....	7
3.3 Issuing of Certificates .....	8
3.4 Renewal and amendments to PECs.....	8
<b>4. Payment terms</b> .....	<b>8</b>
<b>5. Table of Pilot Tariffs</b> .....	<b>9</b>
<b>APPENDIX A: Charges based on ship’s actual draught</b> .....	<b>9</b>
<b>APPENDIX B: Charges based on Ships Net Tonnage</b> .....	<b>9</b>
<b>APPENDIX C: Charges – Other</b> .....	<b>9</b>
APPENDIX A: 2020 Pilotage charges based on ship’s actual draught 1/3 .....	10
APPENDIX A: 2020 Pilotage charges based on ship’s actual draught 2/3 .....	11
APPENDIX A: 2020 Pilotage charges based on ships actual draught 3/3 .....	12
<b>APPENDIX B: 2020 Pilotage charges based on ship’s net tonnage</b> .....	<b>13</b>
<b>APPENDIX C: 2020 Pilotage Tariffs Other Charges</b> .....	<b>14</b>
<b>APPENDIX D: Map of Southampton Harbour Authority Limits and Pilotage Positions</b>	<b>15</b>
<b>APPENDIX E: Southampton VTS pilot booking process</b> .....	<b>16</b>

# **ABP Southampton Pilotage Charges**

Charges are made in accordance with provisions contained in Section 10 of the Pilotage Act 1987.

## **1. Pilotage and service charges**

### **1.1 Charges for services of a pilot – General provisions**

The pilotage charges as set out in the Table of Pilot Tariffs (section 5) are for pilotage services rendered to vessels equal to or greater than 61 metres length overall and vessels equal to or greater than 20 metres length overall if carrying more than 12 passengers. For the purposes of these charges “vessel” means any floating craft whether self-propelled (either by power or wind) or towed.

- Pilotage charges are based on draught (calculated in 10-centimetre bands), net tonnage, deadweight or a combination of these.
- The minimum draught upon which charges are calculated is 3.70 metres.
- The draught charged shall be the actual draught rounded up to the nearest full decimetre (e.g. 10.16m rounds up to 10.20m).

### **1.2 Service charge**

In addition to the charges for the services of a pilot, a service charge for the provision, maintenance and upkeep of pilot boats and ancillary services is payable for each occasion when a pilot is employed. This charge is applied as follows, subject to a maximum of £737.06:

- 59.00% of all applicable charges for all vessels paying pilotage rates under rates 1, 2, 3 and 4 of the Table of Pilot Tariffs (section 5).
- 29.50% of all applicable charges for all vessels which do not pay pilotage rates under rates 1, 2, 3 and 4 of the Table of Pilot Tariffs (section 5).

### **1.3 Minimum charge**

Notwithstanding the actual sum of the charges under sections 1.1 and 1.2, the total charged under these sections shall not be less than:

- £603.43 where rates 1, 2, 3 and 4 of the Table of Pilot Tariffs apply.
- £452.54 (75% of the above) where rates 1, 2, 3 and 4 of the Table of Pilot Tariffs do not apply.

Additional charges as set out in Section 2 will apply to the minimum charge.

### **1.4 Pilots National Pension Fund (PNPF) deficit surcharge**

A 7.5% surcharge on all charges under sections 1.1,1.2,1.3, 2.1, 2.3, 2.4, 2.5, 2.8, 2.11, 2.12 & 3.1 will be levied to address Associated British Port's liabilities in respect of the PNPF deficit.

### **1.5 Administration charge**

Charges for services and conservancy shall be collected from the relevant "Pilotage, Conservancy and POC" (point of contact) agency as entered in the billing section of the Agents Online database. If charges are declined by the inputted agency, the charges will be collected from the booking agent and an administration charge of £209.80 applied.

### **1.6 Fuel adjustment mechanism**

As in 2020, there will continue to be no fuel surcharge from 1 January 2021.

Given the volatility of world fuel prices this this aspect of our cost base will be kept under regular review and a surcharge may be applied at any point in the future if deemed appropriate.

## **2. Additional pilotage service charges**

### **2.1 Attendance charge**

Where a pilot booking is amended or cancelled after a pilot has been embarked in first transport but before the pilot has embarked the vessel, an attendance charge of 75% of the charges under section 1.1 & 1.2, or 1.3, will apply, subject to a maximum charge of £839.20.

Where a Pilot has embarked a vessel but the voyage has not commenced within 30 minutes of the confirmed time, a charge of £225.54 per pilot, per hour or part thereof shall apply after the first 30 minutes where a pilot is required to remain onboard.

Where a pilot is required to remain onboard a vessel more than 30 minutes after the voyage has been completed a charge of £225.54 per pilot, per hour or part thereof shall apply after the first 30 minutes.

A pilot's availability to remain onboard a vessel is not guaranteed.

### **2.2 Embarkation and disembarkation of non-ABP personnel**

Embarkation and disembarkation of non-ABP personnel by a pilot launch shall be charged at the rates detailed in section 2.9. This service is to be arranged in advance with Southampton VTS and is subject to launch availability and capacity. No guarantee of availability is made.

### **2.3 Cancellation charges**

Where a pilot booking is amended or cancelled within 3 hours of the confirmed arrival or departure time a cancellation charge of 75% of the charges under section 1.1 & 1.2, or 1.3, will apply, subject to a maximum charge of £839.20.

### **2.4 Choice Retainer Supplement (Container Port) and Additional Pilot Charge**

Container vessels bound to or from the container terminal over 280m length overall or 60,000MT summer deadweight require a specialist pilot and will be subject to a Choice Retainer Supplement (Container Port) of £170.05.

Container vessels bound to or from the container terminal over 365m length overall and with a beam over 45m require an additional specialist pilot and will be subject to an additional pilot charge of £170.05.

## **2.5 Dead ship pilotage**

Where a vessel is a dead ship, i.e. without propulsion, an additional charge of 50% of the charges under section 1.1 & 1.2, and 1.3, will apply.

## **2.6 Late notice booking charge**

An additional charge of 50% of the charges under section 1.1 & 1.2, or 1.3, will apply where a pilot booking is confirmed less than 3 hours before the vessel arrives at the pilot station or departs the berth.

## **2.7 Overcarriage and pre-carriage of pilots**

Arrangements can be made for a pilot to remain onboard a ship, overcarriage, or to board a ship early, pre-carriage, subject to the provision of adequate notice and availability of pilots.

If a pilot is required to be overcarried a charge of £225.54 per hour or part thereof shall apply from the time the ship departs the compulsory pilotage area until the pilot is repatriated to the designated pilot station.

If a pilot is required to board a ship outside of the compulsory pilotage area a charge of £225.54 per hour or part thereof will apply from the time the pilot departs the designated pilot station until the time the ship enters the compulsory pilotage area.

These charges are in addition to the pilotage charge for the vessel.

Vessels overcarrying or pre-carrying pilots must provide suitable accommodation, sustenance and lifesaving equipment for the pilot. An agent will be required to pay all repatriation and arrangement costs. Hotel and transportation should reflect the pilot's status as a senior marine professional.

## **2.8 Pilotage exceeding 6 hours**

If a pilotage act exceeds 6 hours, without a change in pilot, an additional charge of 75% of the charges under section 1.1 & 1.2, or 1.3, will apply.

Acts exceeding 12 hours are subject to price on application - e-mail [southamptonvts@abports.co.uk](mailto:southamptonvts@abports.co.uk) with no less than 72 hours' notice. Pilotage will be subject to availability.

## 2.9 Hire of a pilot launch

Pilot launches are available for hire to transfer personnel to/from vessels. The charge for a pilot launch to attend a single vessel is detailed in the table below.

Portsmouth Harbour to South of Nab Tower inc. Pilot Station A	£686.57
Portsmouth Harbour to Pilot Station B, C or D	£549.26
Portsmouth Harbour to Pilot Station E	£329.60
Portsmouth Harbour to Pilot Station F	£234.00
Southampton Docks to Pilot Station Lepe	£234.00
Southampton Docks transfer	£234.00

Each subsequent vessel serviced by the same launch will be subject to an additional charge of £104.90.

The rental charge includes 15 minutes of waiting time at the destination vessel. Each occasion where a launch is required to wait more than 15 minutes at the destination vessel will be subject to an additional charge of £104.90 per 30 mins or part thereof.

Availability of launches for hire is not guaranteed.

An administration fee of £209.80 shall be payable for rental that is arranged outside of normal office hours (0900-1700 Monday to Friday excluding bank holidays).

## 2.10 Safe access and egress

Where a pilot is not able to safely board or disembark a vessel from the shore, the transfer will be made by coded pilot launch and an additional charge of £234 per act will apply.

Early notification of such a requirement should be made to Southampton VTS to ensure the availability of a pilot launch.

## 2.11 Services of an Assistant Pilot

Where an assistant pilot is carried an additional charge of 55% of the of the charges under section 1.1 & 1.2, or 1.3, will apply.

## 2.12 Charge for vessels over 60,000 DWT

Additional charges will apply for inbound vessels over 60,000MT summer deadweight. These charges are outlined in Rate 12.

### **2.13 VTS acting on behalf of the point of contact or nominated agency**

An administration charge of £209.80 will be payable where, within 3 hours of a planned arrival or departure, the required ship and pilotage details in the Agents Online database, as provided by the point of contact, are incomplete or inaccurate. Details required for a pilot booking are outlined in Appendix E.

An administration charge of £209.80 will be payable on each occasion where Southampton VTS are required to arrange services for a vessel, including but not limited to towage, line handling or agency.

### **2.14 Compass Adjustor**

Vessels requiring the services of a compass adjustor which involves a ship swing through 360 degrees in open water and subsequent certification, therefore resulting in a longer act of pilotage, will be charged a supplement of £188.00.

## **3. Pilotage exemption certificates (PEC)**

### **3.1 Acts of self-pilotage**

In circumstances where the employment of a pilot would otherwise be compulsory, 25% of the charges under sections 1.1 & 1.2 will be levied against the vessel for any part of the pilotage area where the Master or a bona fide deck officer holds a PEC.

Minimum charges, section 1.3, shall not apply to PEC charges.

Charges for acts of self-pilotage, as defined above, shall be applied against all vessels making use of the port. For the purpose of these charges, this shall mean vessels undertaking acts of self-pilotage and making use of the area to the north of an imaginary straight line between Hill Head on the eastern side of the entrance to Southampton Water and Stansore Point on the western side.

Charges for acts of self-pilotage as defined above may be compounded on application.

Monthly returns of acts of self-pilotage are required to be made to ABP detailing draught, the voyage covered and the number of self-pilot acts.

### **3.2 Examinations**

A charge of £314.70 shall apply to each examination for a PEC.

Cancellation of a PEC exam within 10 days of the booked date, will result in a cancellation charge of £314.70.



### **3.3 Issuing of Certificates**

The charge for first issue of a PEC following successful application will be £157.35.

This fee will be payable for the re-issue of a damaged or lost certificate.

### **3.4 Renewal and amendments to PECs**

A charge of £157.35 will apply for the annual renewal of a PEC.

Amendments to a current PEC, i.e. the addition of vessels or geographic areas, will incur a charge of £120 per amendment.

## **4. Payment terms**

Unless expressly agreed otherwise, all charge detailed herein are payable on demand.

If charges incurred are not paid within 30 days from the date on which they are due interest at 5% per month will be applied.

## 5. Table of Pilot Tariffs

<b>RATE</b>	<b>DESCRIPTION</b>
<b>APPENDIX A: Charges based on ship's actual draught</b>	
<b>1</b>	Pilot Boarding East of Horse Sand Fort including <b>A, B, C, D</b> and <b>E</b> to Fawley, Hamble or Netley – or Vice Versa.
<b>2</b>	Pilot Boarding East of Horse Sand Fort including <b>A, B, C, D</b> and <b>E</b> to Central Solent and Anchorages West of Horse Sand Fort – or Vice Versa
<b>3</b>	Pilot Boarding <b>F</b> , Spithead Anchorage or East Lepe Pilot Boarding to Fawley, Hamble or Netley – or Vice Versa
<b>4</b>	Pilot Boarding <b>F</b> , Spithead Anchorage or East Lepe Pilot Boarding to Central Solent and Anchorages West of Horse Sand Fort – or Vice Versa
Rate 4 does not apply to PECs.	Central Solent and Anchorages West of Horse Sand Fort to Fawley, Hamble or Netley – or Vice Versa
<b>5</b>	Fawley, Hamble or Netley to Southampton Docks (North of NW Netley) up to and including 110 berth and below Itchen Bridge – or Vice Versa
<b>6</b>	Southampton Docks (North of NW Netley) to Berths or Anchorages above 110 berth or Itchen Bridge - or Vice Versa
<b>7</b>	This rate is not in use for 2021 tariff
<b>APPENDIX B: Charges based on Ships Net Tonnage</b>	
<b>8</b>	Additional rate for the Inward Pilotage of any vessel in excess of 40,000 NT
<b>9</b>	Berthing or unberthing at jetties
<b>10</b>	Additional to Rate 9 above if to or from an anchorage within port limits
<b>11</b>	For moving ships in and around Southampton Docks (North of NW Netley)
<b>APPENDIX C: Charges – Other</b>	
<b>12</b>	Charges for vessels 60k DWT and over
<b>APPENDIX D: Map of Southampton Harbour Authority Limits and Pilotage Positions</b>	

## APPENDIX A: 2021 Pilotage charges based on ship's actual draught 1/3

<b>Draught</b>	<b>Rate 1</b>	<b>Rate 2</b>	<b>Rate 3</b>	<b>Rate 4</b>	<b>Rate 5</b>	<b>Rate 6</b>
<b>(m)</b>	<b>£</b>	<b>£</b>	<b>£</b>	<b>£</b>	<b>£</b>	<b>£</b>
<b>Min 3.70</b>	128.76	125.06	94.62	49.82	61.62	26.94
<b>3.80</b>	128.76	125.06	94.62	49.82	61.62	26.94
<b>3.90</b>	136.77	133.00	100.50	52.90	61.62	28.80
<b>4.00</b>	136.77	133.00	100.50	52.90	61.62	28.80
<b>4.10</b>	142.09	140.86	106.42	56.02	61.62	30.48
<b>4.20</b>	142.09	140.86	106.42	56.02	61.62	30.48
<b>4.30</b>	147.42	146.04	110.23	72.11	61.62	31.53
<b>4.40</b>	147.42	146.04	110.23	72.11	61.62	31.53
<b>4.50</b>	189.71	181.29	142.08	76.08	79.30	33.22
<b>4.60</b>	189.71	181.29	142.08	76.08	79.30	33.22
<b>4.70</b>	199.39	190.78	147.08	79.78	79.30	34.87
<b>4.80</b>	199.39	190.78	147.08	79.78	79.30	34.87
<b>4.90</b>	205.72	199.96	154.29	82.50	79.30	36.08
<b>5.00</b>	205.72	199.96	154.29	82.50	79.30	36.08
<b>5.10</b>	215.30	209.42	161.63	86.44	79.30	37.76
<b>5.20</b>	215.30	209.42	161.63	86.44	79.30	37.76
<b>5.30</b>	225.03	218.88	166.51	90.23	79.30	39.39
<b>5.40</b>	225.03	218.88	166.51	90.23	79.30	39.39
<b>5.50</b>	231.40	225.03	173.92	92.67	79.30	40.59
<b>5.60</b>	231.40	225.03	173.92	92.67	79.30	40.59
<b>5.70</b>	241.08	234.47	181.29	96.61	79.30	42.17
<b>5.80</b>	241.08	234.47	181.29	96.61	79.30	42.17
<b>5.90</b>	250.75	243.87	186.06	100.52	79.30	43.90
<b>6.00</b>	250.75	243.87	186.06	100.52	79.30	43.90
<b>6.10</b>	257.06	250.09	193.50	104.43	79.30	45.51
<b>6.20</b>	257.06	250.09	193.50	104.43	79.30	45.51
<b>6.30</b>	349.57	300.01	290.92	151.21	105.70	88.81
<b>6.40</b>	349.57	300.01	290.92	151.21	105.70	88.81
<b>6.50</b>	357.95	311.05	301.49	156.88	105.70	92.20
<b>6.60</b>	357.95	311.05	301.49	156.88	105.70	92.20
<b>6.70</b>	370.50	321.98	312.13	160.43	105.70	94.29
<b>6.80</b>	370.50	321.98	312.13	160.43	105.70	94.29
<b>6.90</b>	382.96	329.35	319.24	166.15	105.70	97.56
<b>7.00</b>	382.96	329.35	319.24	166.15	105.70	97.56
<b>7.10</b>	391.35	340.31	329.89	171.76	105.70	100.83
<b>7.20</b>	391.35	340.31	329.89	171.76	105.70	100.83
<b>7.30</b>	403.76	351.35	340.57	175.40	105.70	103.11
<b>7.40</b>	403.76	351.35	340.57	175.40	105.70	103.11
<b>7.50</b>	416.26	358.67	347.52	181.10	105.70	106.36
<b>7.60</b>	416.26	358.67	347.52	181.10	105.70	106.36
<b>7.70</b>	444.42	395.89	400.76	208.07	132.06	146.61
<b>7.80</b>	444.42	395.89	400.76	208.07	132.06	146.61
<b>7.90</b>	457.56	407.51	412.75	210.99	132.06	149.60
<b>8.00</b>	457.56	407.51	412.75	210.99	132.06	149.60
<b>8.10</b>	466.31	419.10	420.72	217.32	132.06	153.11
<b>8.20</b>	466.31	419.10	420.72	217.32	132.06	153.11
<b>8.30</b>	480.36	426.86	432.53	221.45	132.06	158.39
<b>8.40</b>	480.36	426.86	432.53	221.45	132.06	158.39
<b>8.50</b>	492.75	438.56	444.65	227.71	132.06	161.34
<b>8.60</b>	492.75	438.56	444.65	227.71	132.06	161.34

## APPENDIX A: 2021 Pilotage charges based on ship's actual draught 2/3

<b>Draught</b>	<b>Rate 1</b>	<b>Rate 2</b>	<b>Rate 3</b>	<b>Rate 4</b>	<b>Rate 5</b>	<b>Rate 6</b>
<b>(m)</b>	<b>£</b>	<b>£</b>	<b>£</b>	<b>£</b>	<b>£</b>	<b>£</b>
<b>8.70</b>	501.58	446.67	452.41	234.01	132.06	165.82
<b>8.80</b>	501.58	446.67	452.41	234.01	132.06	165.82
<b>8.90</b>	514.81	454.10	464.29	242.15	132.06	170.05
<b>9.00</b>	514.81	454.10	464.29	242.15	132.06	170.05
<b>9.10</b>	528.00	465.76	476.17	246.55	132.06	173.03
<b>9.20</b>	528.00	465.76	476.17	246.55	132.06	173.03
<b>9.30</b>	566.47	503.72	548.34	288.65	149.60	222.30
<b>9.40</b>	566.47	503.72	548.34	288.65	149.60	222.30
<b>9.50</b>	575.83	511.89	557.32	293.37	149.60	225.99
<b>9.60</b>	575.83	511.89	557.32	293.37	149.60	225.99
<b>9.70</b>	589.88	524.45	570.92	300.56	149.60	231.40
<b>9.80</b>	589.88	524.45	570.92	300.56	149.60	231.40
<b>9.90</b>	599.24	532.86	580.24	305.35	149.60	238.86
<b>10.00</b>	599.24	532.86	580.24	305.35	149.60	238.86
<b>10.10</b>	613.95	545.57	593.61	312.48	149.60	242.26
<b>10.20</b>	613.95	545.57	593.61	312.48	149.60	242.26
<b>10.30</b>	627.29	557.86	607.26	319.63	149.60	248.00
<b>10.40</b>	627.29	557.86	607.26	319.63	149.60	248.00
<b>10.50</b>	636.68	566.09	616.35	324.43	149.60	253.57
<b>10.60</b>	636.68	566.09	616.35	324.43	149.60	253.57
<b>10.70</b>	650.67	578.59	629.87	331.56	149.60	257.06
<b>10.80</b>	650.67	578.59	629.87	331.56	149.60	257.06
<b>10.90</b>	664.79	591.08	643.47	338.64	149.60	262.71
<b>11.00</b>	664.79	591.08	643.47	338.64	149.60	262.71
<b>11.10</b>	674.05	599.43	652.55	343.57	149.60	268.27
<b>11.20</b>	674.05	599.43	652.55	343.57	149.60	268.27
<b>11.30</b>	688.18	611.89	666.18	350.59	149.60	271.87
<b>11.40</b>	688.18	611.89	666.18	350.59	149.60	271.87
<b>11.50</b>	702.17	624.49	679.62	357.73	149.60	277.39
<b>11.60</b>	702.17	624.49	679.62	357.73	149.60	277.39
<b>11.70</b>	711.57	632.76	688.75	362.48	149.60	282.94
<b>11.80</b>	711.57	632.76	688.75	362.48	149.60	282.94
<b>11.90</b>	733.61	645.18	707.12	369.68	149.60	289.07
<b>12.00</b>	733.61	645.18	707.12	369.68	149.60	289.07
<b>12.10</b>	744.35	657.71	720.54	376.88	149.60	293.92
<b>12.20</b>	744.35	657.71	720.54	376.88	149.60	293.92
<b>12.30</b>	1,180.28	999.02	1,087.55	572.47	149.60	299.44
<b>12.40</b>	1,180.28	999.02	1,087.55	572.47	149.60	299.44
<b>12.50</b>	1,202.52	1,017.71	1,107.91	579.53	149.60	303.05
<b>12.60</b>	1,202.52	1,017.71	1,107.91	579.53	149.60	303.05
<b>12.70</b>	1,217.28	1,030.31	1,121.50	590.37	149.60	308.64
<b>12.80</b>	1,217.28	1,030.31	1,121.50	590.37	149.60	308.64
<b>12.90</b>	1,239.39	1,048.88	1,144.84	600.95	149.60	312.34
<b>13.00</b>	1,239.39	1,048.88	1,144.84	600.95	149.60	312.34
<b>13.10</b>	1,254.21	1,061.53	1,155.55	608.22	149.60	317.09
<b>13.20</b>	1,254.21	1,061.53	1,155.55	608.22	149.60	317.09
<b>13.30</b>	1,276.39	1,080.19	1,175.93	615.32	149.60	321.82
<b>13.40</b>	1,276.39	1,080.19	1,175.93	615.32	149.60	321.82
<b>13.50</b>	1,298.35	1,098.95	1,196.24	629.64	149.60	326.54
<b>13.60</b>	1,298.35	1,098.95	1,196.24	629.64	149.60	326.54
<b>13.70</b>	1,313.15	1,111.48	1,208.20	635.89	149.60	331.24
<b>13.80</b>	1,313.15	1,111.48	1,208.20	635.89	149.60	331.24

## APPENDIX A: 2021 Pilotage charges based on ships actual draught 3/3

<b>Draught (m)</b>	<b>Rate 1 £</b>	<b>Rate 2 £</b>	<b>Rate 3 £</b>	<b>Rate 4 £</b>	<b>Rate 5 £</b>	<b>Rate 6 £</b>
<b>13.90</b>	1,335.25	1,127.28	1,230.36	647.56	149.60	335.96
<b>14.00</b>	1,335.25	1,127.28	1,230.36	647.56	149.60	335.96
<b>14.10</b>	1,357.39	1,148.84	1,250.70	658.27	149.60	340.69
<b>14.20</b>	1,357.39	1,148.84	1,250.70	658.27	149.60	340.69
<b>14.30</b>	1,372.14	1,161.27	1,264.01	665.30	149.60	345.44
<b>14.40</b>	1,372.14	1,161.27	1,264.01	665.30	149.60	345.44
<b>14.50</b>	1,394.31	1,180.09	1,284.65	676.12	149.60	350.18
<b>14.60</b>	1,394.31	1,180.09	1,284.65	676.12	149.60	350.18
<b>14.70</b>	1,416.49	1,198.86	1,305.03	686.90	149.60	354.87
<b>14.80</b>	1,416.49	1,198.86	1,305.03	686.90	149.60	354.87
<b>14.90</b>	1,431.27	1,211.18	1,318.63	694.00	149.60	359.62
<b>15.00</b>	1,431.27	1,211.18	1,318.63	694.00	149.60	359.62
<b>15.10</b>	1,453.26	1,230.06	1,339.01	704.80	149.60	364.34
<b>15.20</b>	1,453.26	1,230.06	1,339.01	704.80	149.60	364.34
<b>15.30</b>	1,470.44	1,248.84	1,359.46	715.46	149.60	371.62
<b>15.40</b>	1,470.44	1,248.84	1,359.46	715.46	149.60	371.62

## APPENDIX B: 2021 Pilotage charges based on ship's net tonnage

Net Tonnage	Rate 8 £	Rate 9 £
Up to 500		36.66
500 - 5,000		88.07
5,001 - 10,000		117.32
10,001 - 15,000		146.61
15,001 - 20,000		263.92
20,001 - 25,000		373.96
25,001 - 30,000		418.04
30,001 - 35,000		462.01
35,001 - 40,000		505.99
40,001 - 45,000	55.57	542.64
45,001 - 50,000	111.04	579.36
50,001 - 55,000	157.11	615.96
55,001 - 60,000	222.07	652.69
60,001 - 65,000	277.67	689.54
65,001 - 70,000	333.16	726.09
70,001 - 75,000	388.69	762.74
75,001 - 80,000	444.06	799.45
80,001 - 85,000	499.80	836.24
85,001 - 90,000	555.25	872.78
90,001 - 95,000	610.73	909.49
95,001 - 100,000	667.42	946.34
100,001 - 105,000	721.82	982.81
105,001 - 110,000	777.23	1,019.62
110,001 - 115,000	832.84	1,056.26
115,001 - 120,000	888.31	1,092.95
120,001 - 125,000	943.86	1,129.59
125,001 - 130,000	999.49	1,168.32
130,001 - 135,000	1,054.95	1,203.16
135,001 - 140,000	1,110.40	1,239.94
140,001 - 145,000	1,165.95	1,276.85
145,001 - 150,000	1,221.45	1,314.86
150,001 - 155,000	1,277.00	
155,001 - 160,000	1,332.56	
160,001 - 165,000	1,388.11	
165,001 - 170,000	1,443.55	
170,001 - 175,000	1,499.10	
175,001 - 180,000	1,554.68	
180,001 - 185,000	1,610.03	
185,001 - 190,000	1,665.60	
190,001 - 195,000	1,721.22	
195,001 - 200,000	1,776.61	

**Rate 10 - Additional to Rate 9 above if to or from an anchorage within Port Limits**

Up to 500 NT	36.66
Over 500 NT	73.34

**Rate 11 - For moving ships in and out of Southampton docks (North of NW Netley)**

Up to 500 NT	73.34
500 to 99999 NT	146.60

## APPENDIX C: 2021 Pilotage Tariffs Other Charges

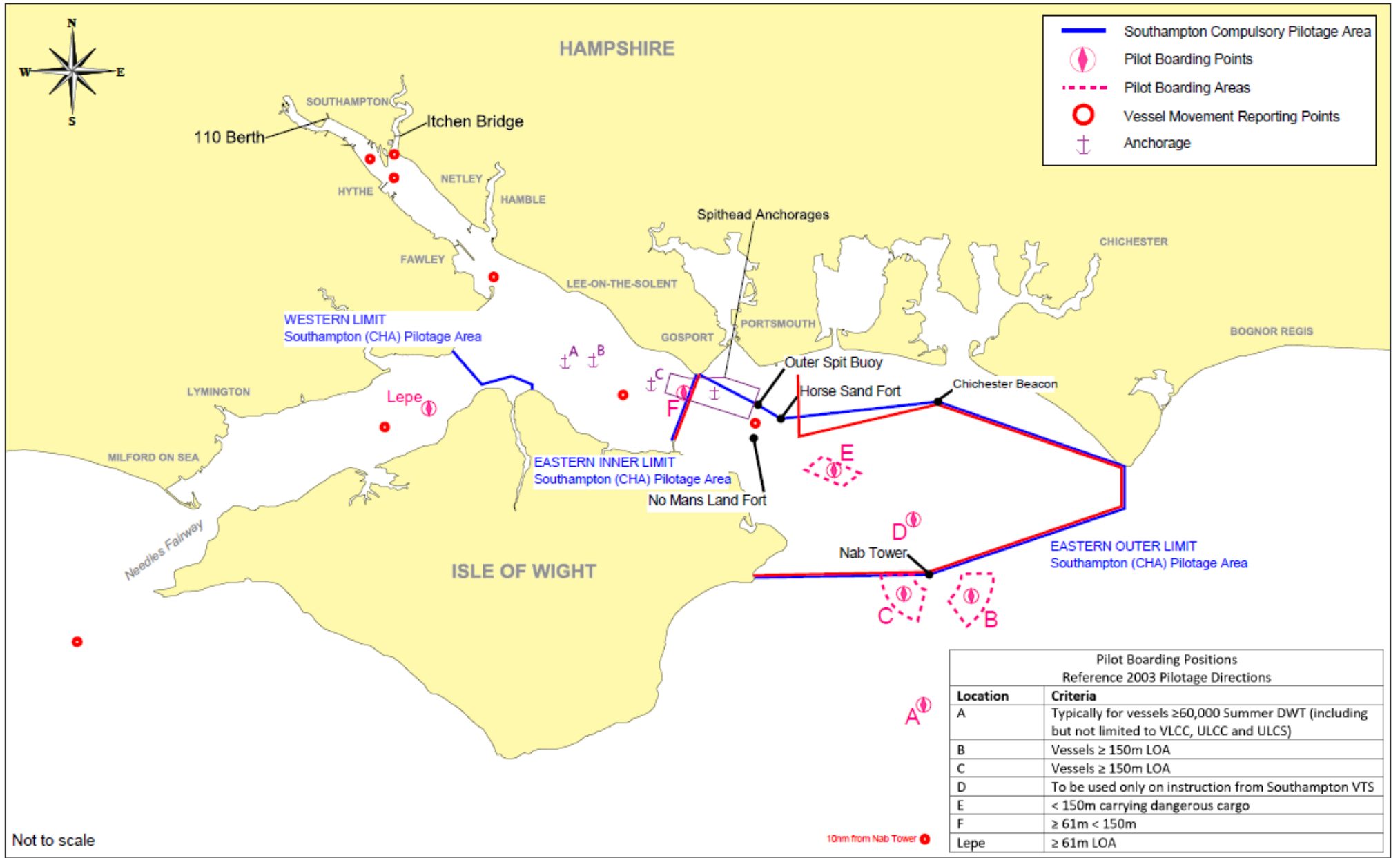
### Rate 12 - Charges for vessels 60k DWT and over

Lower	Vessels 60k to 120k dwt	£136.77
Higher	Vessels 120k dwt and over	£273.56

# APPENDIX D: Map of Southampton Harbour Authority Limits and Pilotage Positions



## Port of Southampton Pilot Boarding Positions





## APPENDIX E: Southampton VTS pilot booking process

To assist in the allocation of resources and personnel, Masters and agents are requested to provide as much notice as possible of planned voyages within the pilotage area, to ensure that all entries in the Agents Online portal are updated regularly and are cancelled where necessary.

Vessels bound for the ABP Southampton CHA pilotage area requiring the services of a pilot shall give Southampton VTS (Vessel Traffic Services) a minimum of 24 hours advance notification through the creation of a voyage in the Agents Online portal.

Confirmation of the vessel's estimated time of arrival at the Nab Tower or Needles Fairway, or departure from berth or anchorage, shall be sent to Southampton Pilots by VHF radio telephone, channel 09, a minimum of 6 hours prior to arrival. If the vessel is not within VHF range, the confirmation should be sent via the ship's agent, directly to the VTS data centre by email at [southamptonvts@abports.co.uk](mailto:southamptonvts@abports.co.uk) or telephone +44(0) 7725 639565 during office hours or +44 (0) 2380 608208 at other times.

<u>Questions</u>	
<i>A</i>	Requested ETA or ETD
<i>B</i>	Next Port of Call
<i>C</i>	Forward and Aft Draft (1.025 Salt Water)
<i>D</i>	No. passengers & crew
<i>E</i>	Number of Tugs booked
<i>F</i>	ISPS Level
<i>G</i>	Ballast, Loaded or IMDG cargo *
<i>H</i>	Damage, Defects, Failures or restrictions
<i>I</i>	Departure Direction (Nab or Needles)
<i>J</i>	Pilot arrangements rigged to comply with SOLAS 23
<i>K</i>	MDH Completed & Submitted
<i>L</i>	Other information (Bunkering, Hot Works, Diving etc..)