

Local Notice to Mariners**Number 80(T) of 2025****23/07/2025****Rolex Fastnet Race**

NOTICE IS HEREBY GIVEN jointly by ABP Southampton, the Cowes Harbour Master and the Kings Harbour Master Portsmouth that the **Rolex Fastnet Race** will start from the Central Solent off Cowes with 9 starts between 1120hrs and 1300 BST on **Saturday 26 July 2025**. The race finishes in Cherbourg.

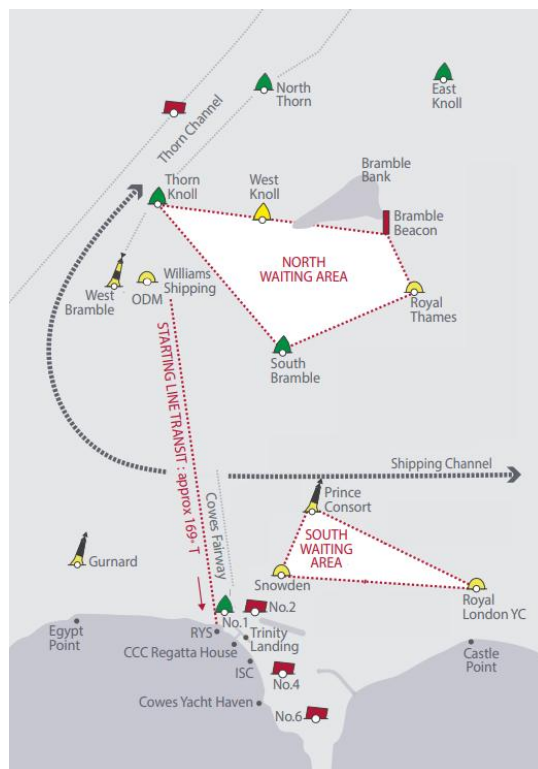
Approximately 480 yachts ranging from 9.0 metres to 32 metres waterline length, including cruising and racing yachts of both monohull and multi-hull design will participate.

Start Line

The start line for the race will be the Royal Yacht Squadron (RYS) start line which runs from the RYS flagstaff in West Cowes, northwards to the special mark Williams Shipping (position 50°47'.20N, 001°18'.55W). An inflatable Rolex buoy (which may not be exactly on the starting line), up to 200m from the RYS flagstaff marks the southern limit of the start line (see figure 1). Competitors will cross the start line heading to the west and continue out of the Solent.

Two pre-start waiting areas have been established and are detailed in Figure 1. Yachts are requested to wait in these areas until twenty minutes before their warning signal.

The Royal Ocean Racing Club race control, call sign 'Ocean One', can be contacted on VHF channel 72 prior to and during the race start. The race committee, call sign "Ocean One", will broadcast race instructions on VHF channel 28.



Local Notice to Mariners

Figure 1. Fastnet Start Line and waiting area

The Precautionary Area (Thorn Channel)

Mariners are reminded of the “Moving Prohibited Zone” as referred to in [Southampton Harbour Byelaws 2003 No11](#) and [General Direction 10](#) which refers to Clear Channel Vessels and Precautionary Area (Thorn Channel). More Information on this can be found in Local Notice to Mariners 2025 [No.06 Precautionary Area \(Thorn Channel\)](#).

Note: Under certain weather conditions the race may be started to the east, when the start line will be established between the RYS, Cowes and the South Bramble cardinal buoy. The fleet would then sail east through the Forts, then south of the Isle of Wight. All vessels are to navigate with particular caution whilst in the vicinity.

Further information on this event can be found at <https://www.rolexfastnetrace.com/>

This notice will be self-canceling on completion.

**Steven Masters,
Harbour Master**