

Local Notice to Mariners

Number 66(T) of 2025

05/06/2025

Seawork Commercial Marine Exhibition – Mayflower Park – 10th to 12th June 2025

NOTICE IS HEREBY GIVEN that the Seawork and Marine Civils 2025 Commercial Marine Exhibition will take place at Mayflower Park, Southampton, from the 10th to the 12th June 2025. The exhibition runs between 0930 – 1730hrs on 10th and 11th June and 0930 – 1600 on 12th June, with exhibition halls, conferences, and vessels displaying in the temporary marina and in a dedicated water demonstration area.

During Seawork more than 50 craft of up to 30 metres LOA (length overall) will be berthed on the exhibition pontoons.

For the duration of the boat show a 50-metre exclusion zone will be enforced around the mayflower pontoons and mariners are advised to maintain a safe speed and minimum wash when passing.

Events at the Show

During the show there will be considerable activity in the vicinity of the marina complex.

Two areas have been designated (diagrams below) to allow exhibitors to demonstrate craft in excess of 6 knots. These areas are only to be used during show hours.

Area 1: The Marchwood Channel demonstration area is for vessels up to 10 metres in length. The maximum speed in this area is 25 knots. No more than two vessels are allowed in the area at any one time. Speed must be reduced when turning at the western end to avoid causing hazard or risk to private moorings. (See Chart below – Demonstration Area 1)

A marshal boat will be stationed at the entrance to this area. All demonstrators are required to report to this boat before entering the area.

Area 2: For speeds over 25 knots mariners are advised to use the area downstream of the Hythe line, Southeast of of a line drawn from Hythe Pier to the Weston Shelf Buoy. Mariners should abide by COLREGS and must not use navigation aids as rounding marks for high-speed manoeuvres. Please be aware of other recreational users and events within the port. - A speed limit of 40 knots is enforced within Southampton Water, vessels intending to proceed in excess of 40 knots must obtain permission from the Harbour Master prior to departure through the submission of a Risk Assessment to HMSouthampton@abports.co.uk. (see [General Direction 02 Speed restrictions in Southampton water](#)).

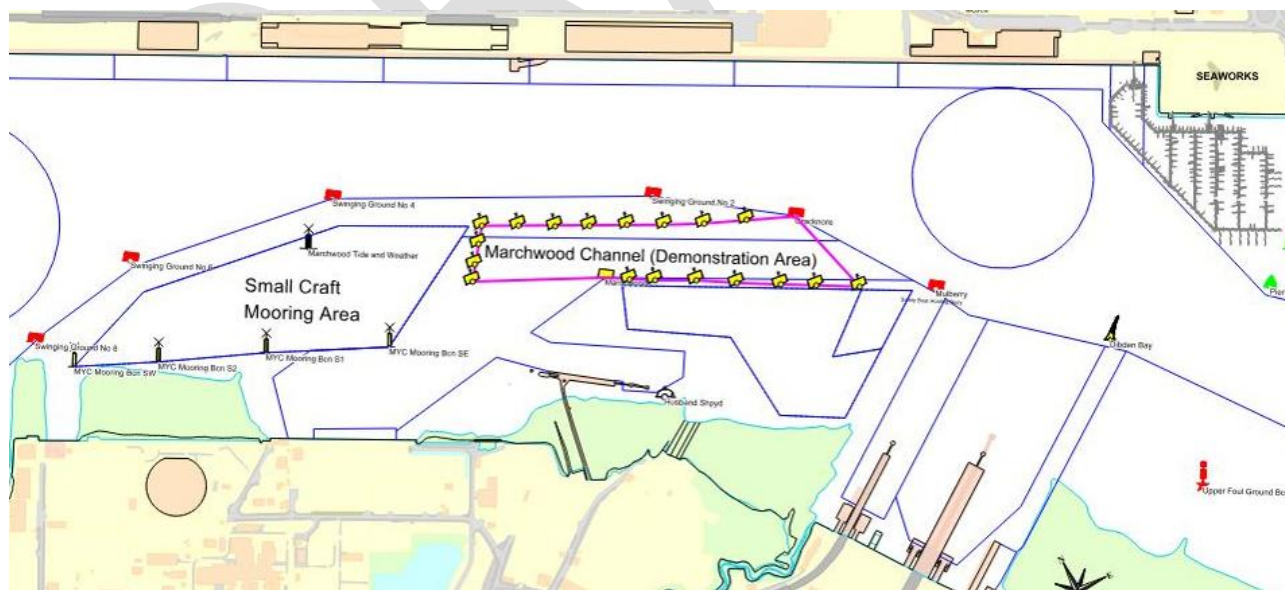
Mariners are reminded to not exceed 6 knots over the ground Northward of a line between Hythe Pier and Western Shelf buoy as per Southampton Harbour Byelaws, unless within designated area or with prior permission from the Harbour Master.

The Exhibition organisers will provide a Marshal boat, which will be in attendance to assist in ensuring exhibitors' compliance with the Harbour Master's Directions and Byelaws and this will maintain a listening watch on VHF Channel 12.

Directions and Byelaws

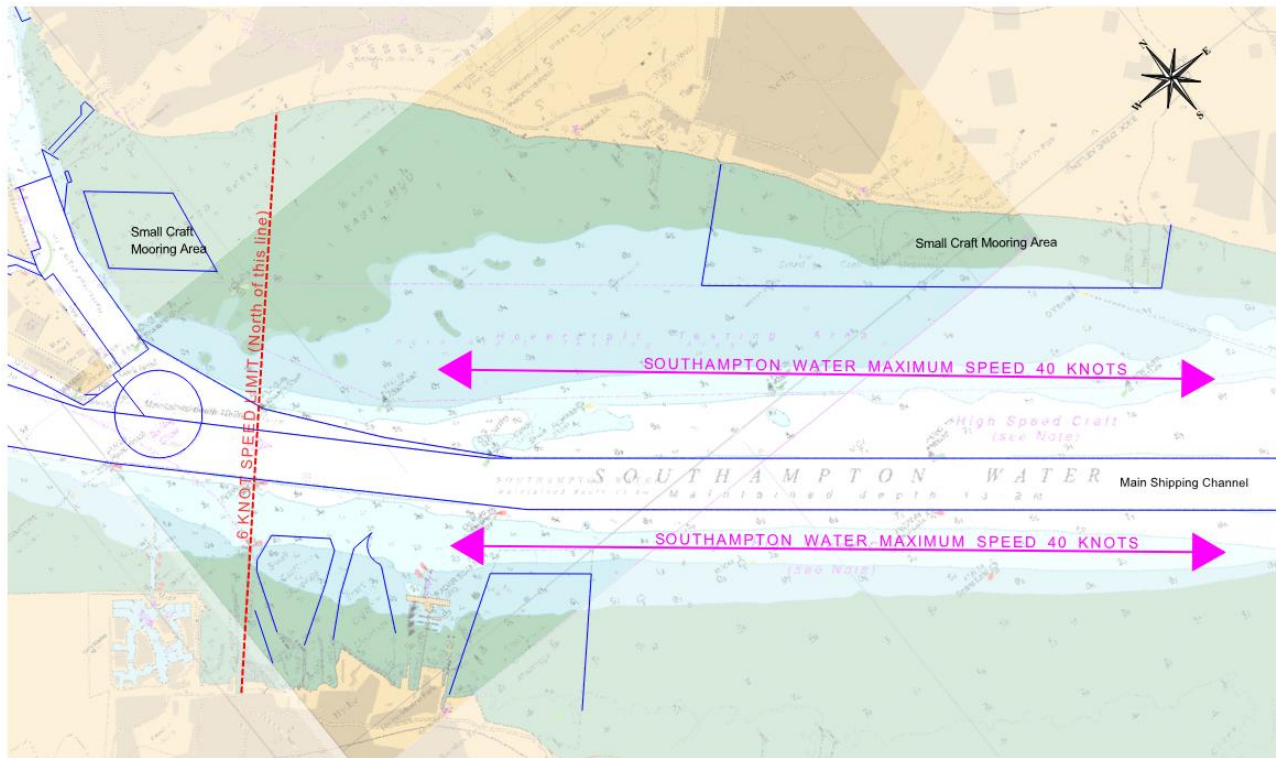
Masters or persons in charge of vessels of any description being exhibited afloat at the Seawork Show are advised of the following Harbour Master's Directions and Southampton Harbour Byelaws (2003):

- ## Area 1 Marchwood Channel Demonstration Area



Local Notice to Mariners

Area 2



This notice will be self-canceling on completion.

Steven Masters,
Harbour Master