

**Local Notice to Mariners****Number 65(T) of 2025****04/06/2025****Round the Island Race Saturday 7<sup>th</sup> June 2025**

**NOTICE IS HEREBY GIVEN** jointly by the King's Harbour Master Portsmouth, the Harbour Master ABP Southampton and the Cowes Harbour Master that the Round the Island Race 2025 will start from Cowes between 0730 and 0900 BST on Saturday 7<sup>th</sup> June 2025. Up to 1000 yachts are expected to take part in the Race.

Mariners are reminded of the “**Moving Prohibited Zone**” as referred to in [Southampton Harbour Byelaws 2003 No11](#) and Local Notice to [Mariners 2025 No.06 Precautionary Area \(Thorn Channel\)](#).

**RACE INFORMATION**

A full description of the race is available from the [Island Sailing Club website](#). The following summary is provided for information purposes:

- The start line extends from the Cowes shoreline at the Royal Yacht Squadron (RYS) to an outer distance mark in the vicinity of the Williams Shipping Buoy.
- Due to the number of competitors taking part, the various class starting times will be staggered to take place at 10-minute intervals between 0730 and 0850. A total of 9 sequential starts will take place, with the last being at 0850.
- The anti-clockwise course around the Isle of Wight will be from Cowes heading west and back to Cowes. Turning points for the race are at the Needles Lighthouse, St Catherine's Point and Bembridge Ledge Buoy (Figure 1).



Figure 1 - Round the Island Race Course

## **Local Notice to Mariners**

It has been agreed with the race organiser that all competitors awaiting their class starting time will proceed to designated waiting areas (Figure 2), to avoid congestion in the main navigable channel. All competitors will be equipped with VHF radio and will keep a listening watch on VHF Channel 22, in the event that a recall or postponement becomes necessary.

The main bulk of the fleet of yachts is expected to pass the Bembridge Ledge Buoy between 1130 and 1700 and the peak finishing time at Cowes is likely to be between 1300 and 1900. It should be noted that the earliest finish could be around 1000 and the finish time limit is 2200.

Mariners are advised to expect increased levels of recreational activity within the Central Solent area throughout this period. Additional information can be requested from "Southampton VTS" on Channel 12.

## Local Notice to Mariners

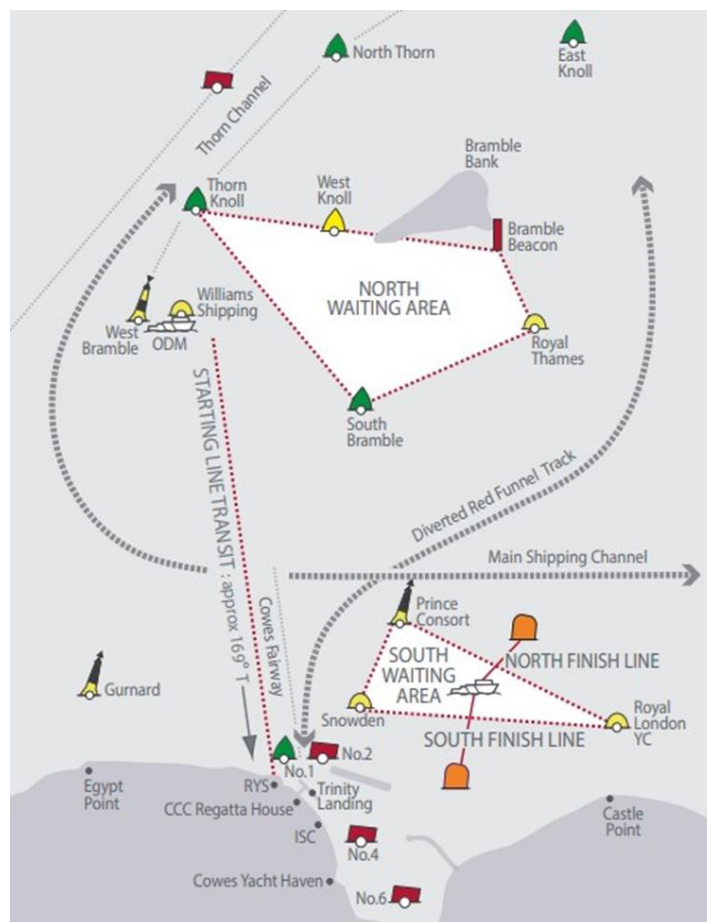


Figure 2 – Race start and Waiting Areas

### SAILING INSTRUCTIONS 2025

- Boats shall not pass inside the outer row of small craft moorings to the west of Yarmouth Harbour entrance.
- Boats shall not pass to the North of either Horse Sand Fort or the obstructions of the row of iron piles off Durns Point, East of Lymington.
- Boats shall not enter the “Moving Prohibited Zone” referred to in Southampton Harbour Byelaw 2003 No11
- Boats shall not pass inside the outer row of moorings off Seaview (between Ryde pier & Bembridge marina)

## **Local Notice to Mariners**

### **COMMERCIAL TRAFFIC**

Mariners are advised that Southampton VTS will restrict commercial traffic movements via the Thorn Channel from 0630 to 0900 (BST).

- Masters of vessels not directly involved in the event are to be clear of the start area by 0630 (BST) until 0900, or when the last fleet of competitors have crossed the start line
- Masters of Red Funnel Ferries and Commanders of Red Jets should avoid passing through the start line area between 0700 – 0900 (BST). Where safe to do so, they should pass east of the Bramble Bank.

All spectator craft not taking part in the race are to keep well clear of the start area. Spectator craft may proceed to one of the designated waiting areas, as depicted at Figure 2.

This notice will be self-cancelling on completion.

**Steven Masters,  
Harbour Master**