

**NOTICE TO MARINERS  
No 74 (T) of 2024**

**Port of Southampton**

**Southampton International Boat Show - 13<sup>th</sup> to 22<sup>nd</sup>  
September 2024**

**Notice is hereby given** that the Southampton International Boat Show will take place on, and adjacent to Mayflower Park, River Test from **13<sup>th</sup> to 22<sup>nd</sup> September 2024**. The Boat Show marina complex will be used to berth display craft between those dates and will be floodlit at night.

For the duration of the boat show a 50-metre exclusion zone will be enforced around the mayflower pontoons and mariners are advised to maintain a safe speed and minimum wash when passing.

**Events at the Show**

During the show there will be considerable activity in the vicinity of the marina complex.

Two areas have been designated (diagrams below) to allow exhibitors to demonstrate craft in excess of 6 knots. These areas are only to be used during show hours.

**Area 1:** For speeds of up to 25 knots and boats of up to 10 metres in length. The area is in the River Test, contained within the Marchwood Channel, and is marked on the Eastern end by joining Mulberry Buoy to Cracknore Buoy to enter the area and on the Western end by a line joining temporary yellow buoys. The Marchwood Buoy and temporary yellow buoys mark the Southern boundary. The temporary yellow buoys will be laid on the week commencing 09<sup>th</sup> September and will be UNLIT (See Chart below – figure 1)

A marshal boat will be stationed at the entrance to this area. All demonstrators are required to report to this boat **before** entering the area.

**Area 2:** For speeds over 25 knots mariners are advised to use the area downstream of the Hythe line Southeast of Hythe pier, Test buoy and Weston Shelf. Mariners should abide by COLREGS and must not use navigation aids as rounding marks for high-speed manoeuvres. Please be aware of other recreational users and events within the port. - A speed limit of 40 knots is enforced within Southampton Water, vessels intending to proceed in excess of 40 knots must obtain permission from the Harbour Master prior to departure through the submission of a Risk Assessment to [HMSouthampton@abports.co.uk](mailto:HMSouthampton@abports.co.uk). (see LNtM 03/2024 Port of Southampton – Safe Speed in Southampton Water for further details).

Mariners are reminded to not exceed 6 knots over the ground Northward of a line between Hythe Pier and Western Shelf buoy as per Southampton Harbour Byelaws, unless within designated areas or with prior permission from the Harbour Master.

The show organisers will provide a security patrol boat, which will be in attendance to assist in ensuring exhibitors' compliance with the Harbour Master's Directions and Byelaws and this will maintain a listening watch on VHF Channel 12.

## **Directions and Byelaws**

Masters or persons in charge of vessels of any description being exhibited afloat at the Boat Show are advised of the following Harbour Master's Directions and Southampton Harbour Byelaws (2003):

1. Vessels are to be navigated to and from Boat Show pontoons in a safe and proper manner.
2. Vessels are not to make use of the main navigational fairway so as to obstruct or impede large commercial vessels, which can navigate only within such fairway. (It should be noted that large vessels bound to or from the Western Docks may be underway at a higher speed than is anticipated in order to maintain safe steerage).
3. Vessels are not to exceed a speed of 6 knots North of a line drawn from Hythe Pier to Weston Shelf Buoy. The exception to this is within the designated demonstration area off Marchwood (Area 1 as indicated on Page 3).
4. No Master or owner of a vessel shall knowingly cause or permit any person to navigate or attempt to navigate a vessel when unfit by reason of drink or drugs to do so.
5. No vessel shall navigate between the hours of sunset and sunrise without displaying the navigation lights prescribed by the International Regulations for Preventing Collisions at Sea (1972), as amended.
6. No person shall discharge distress flares, rockets or pyrotechnics, in any circumstances other than that for which they were intended. To do otherwise is an offence.
7. Vessels shall comply with the Southampton Harbour Byelaws 2003.
8. Vessels shall comply with the verbal directions of the Harbour Master's authorised assistants onboard Southampton Harbour Patrol craft, which will be maintaining a listening watch on VHF Channel 12.

## **Rose Road Association Swim**

Rose Road Association, will be running a sponsored swim event on Saturday 21<sup>st</sup> September between 0900hrs and 1000hrs before the opening of the boat show. The route will depend on the traffic conditions on the day but will be in the vicinity of Mayflower park around the footprint of the boat show. Safety boats and kayaks will be in place strategically placed whilst swimmers are in the water. More information can be requested from VTS on the day or from [https://www.roseroad.org.uk/events/southampton\\_boat\\_show\\_swim/](https://www.roseroad.org.uk/events/southampton_boat_show_swim/)

## **Works on completion**

On completion of the Boat Show, works to disassemble the pontoon complex and to withdraw the piles are expected to last until end of October 2024.

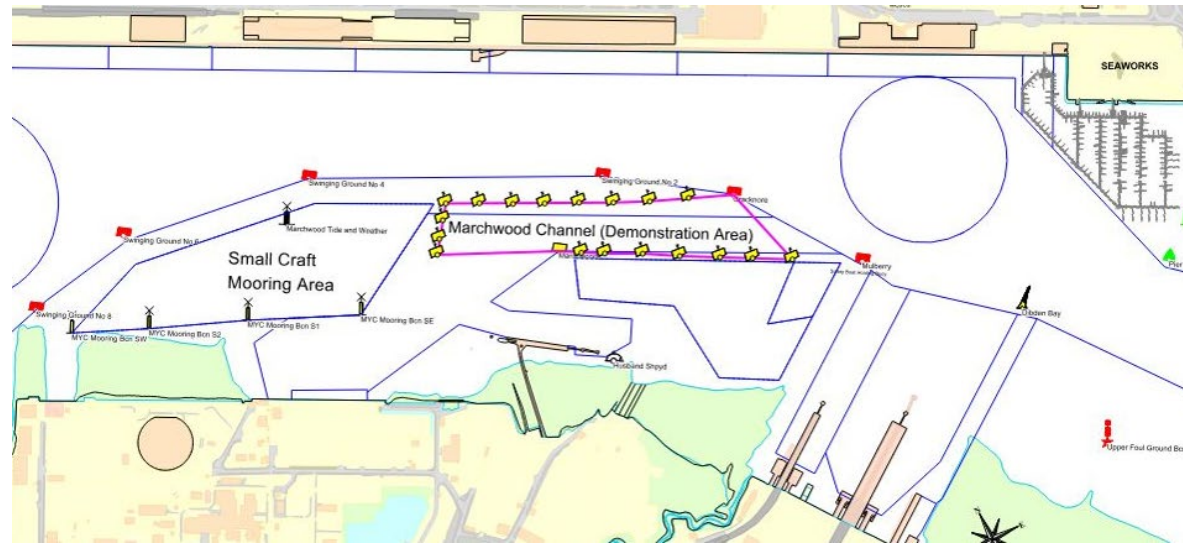
**Vessel Traffic Services Centre  
Ocean Gate, Atlantic Way  
Southampton**

**Captain Steve Masters  
Harbour Master**

09<sup>th</sup> September 2024

Owners, Agents, Charterers, Marinas, Yacht Clubs and Recreational Sailing Organisations should ensure that the contents of this Notice are made known to the masters or persons in charge of their vessels or craft.

## Area 1



## Area 2

