

NOTICE TO MARINERS

No 54(T) of 2024

Port of Southampton: Seawork Commercial Marine Exhibition – Mayflower Park – 11th to 13th June 2024

Notice is hereby given that the Seawork and Marine Civils 2024 Commercial Marine Exhibition will take place at Mayflower Park, Southampton, from the 11th to the 13th June 2024. The exhibition runs between 0930 – 1730hrs on 11th and 12th June and 0930 – 1600 on 13th June, with exhibition halls, conferences, vessels on the temporary marina and on water demonstrations.

During Seawork more than 50 craft of up to 30 metres LOA (length overall) will be berthed on the exhibition pontoons.

For the duration of the boat show a 50-metre exclusion zone will be enforced around the mayflower pontoons and mariners are advised to maintain a safe speed and minimum wash when passing.

Events at the Show

During the show there will be considerable activity in the vicinity of the marina complex.

Two areas have been designated (diagrams below) to allow exhibitors to demonstrate craft in excess of 6 knots. These areas are only to be used during show hours.

Area 1: The Marchwood Channel is for vessels up to 10 metres in length. The maximum speed in this area is 25 knots. No more than two vessels are allowed in the area at any one time. Speed must be reduced when turning at the western end to avoid causing hazard or risk to private moorings. (See Chart below – Demonstration Area 1)

A marshal boat will be stationed at the entrance to this area. All demonstrators are required to report to this boat **before** entering the area.

Area 2: For speeds over 25 knots mariners are advised to use the area downstream of the Hythe line Southeast of Hythe pier, Test buoy and Weston Shelf. Mariners should abide by COLREGS and must not use navigation aids as rounding marks for high-speed manoeuvres. Please be aware of other recreational users and events within the port. - A speed limit of 40 knots is enforced within Southampton Water, vessels intending to proceed in excess of 40 knots must obtain permission from the Harbour Master prior to departure through the submission of a Risk Assessment to HMSouthampton@abports.co.uk. (see LNtM [2024 No 03](#) Port of Southampton – Safe Speed in Southampton Water for further details).

Mariners are reminded to not exceed 6 knots over the ground Northward of a line between Hythe Pier and Western Shelf buoy as per Southampton Harbour Byelaws, unless within designated area or with prior permission from the Harbour Master.

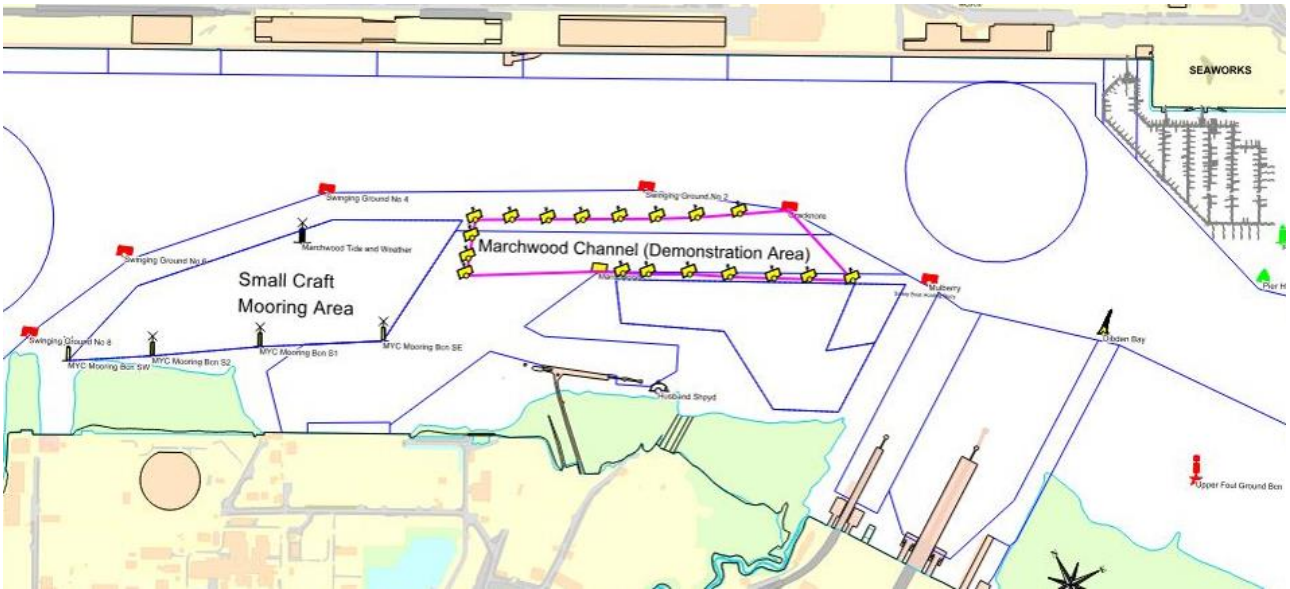
The Exhibition organisers will provide a Marshal boat, which will be in attendance to assist in ensuring exhibitors' compliance with the Harbour Master's Directions and Byelaws and this will maintain a listening watch on VHF Channel 12.

Directions and Byelaws

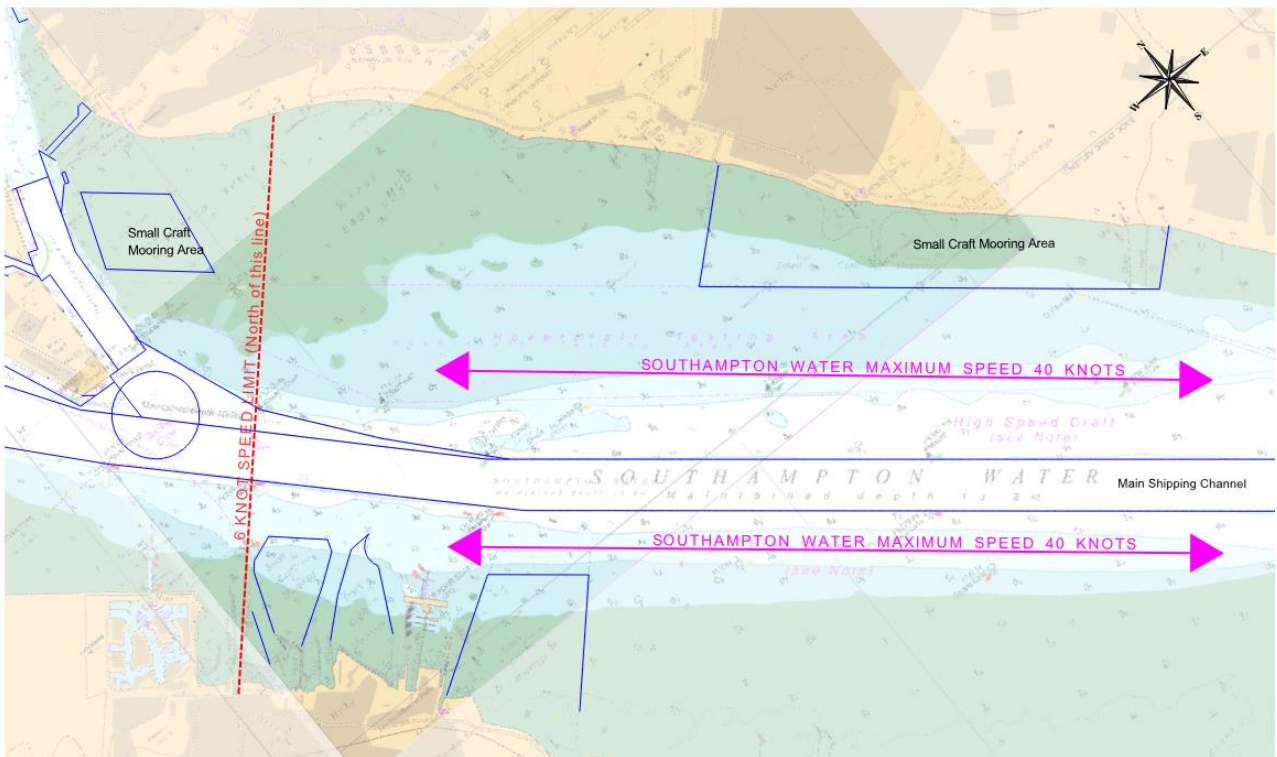
Masters or persons in charge of vessels of any description being exhibited afloat at the Seawork Show are advised of the following Harbour Master's Directions and Southampton Harbour Byelaws (2003):

1. Vessels are to be navigated to and from Seawork Show pontoons in a safe and proper manner.
2. Vessels are not to make use of the main navigational fairway so as to obstruct or impede large commercial vessels, which can navigate only within such fairway. (It should be noted that large vessels bound to or from the Western Docks may be underway at a higher speed than is anticipated in order to maintain safe steerage).
3. Vessels are not to exceed a speed of 6 knots North of a line drawn from Hythe Pier to Weston Shelf Buoy. The exception to this is within the designated demonstration area off Marchwood Channel (Area 1 as indicated on Page 4).
4. No Master or owner of a vessel shall knowingly cause or permit any person to navigate or attempt to navigate a vessel when unfit by reason of drink or drugs to do so.
5. No vessel shall navigate between the hours of sunset and sunrise without displaying the navigation lights prescribed by the International Regulations for Preventing Collisions at Sea (1972), as amended.
6. No person shall discharge distress flares, rockets or pyrotechnics, in any circumstances other than that for which they were intended. To do otherwise is an offence.
7. Vessels shall comply with the Southampton Harbour Byelaws 2003.
8. Vessels shall comply with the verbal directions of the Harbour Master's authorised assistants onboard Southampton Harbour Patrol craft (call sign 'SP'), which will be maintaining a listening watch on VHF Channel 12.

Area 1



Area 2



This notice will be self-cancelling on Friday 14th June 2024

**Vessel Traffic Services Centre
Ocean Gate, Atlantic Way
Southampton**

**Steven Masters
Harbour Master**

04th June 2024

Owners, Agents, Charterers, Marinas, Yacht Clubs and Recreational Sailing Organisations should ensure that the contents of this Notice are made known to the masters or persons in charge of their vessels or craft.