

## NOTICE TO MARINERS

### No 33(T) of 2017 (Re-issue)

#### Port of Southampton

#### Southampton Boat Show

#### 15<sup>th</sup> to 24<sup>th</sup> September 2017

**NOTICE IS HEREBY GIVEN** that the Southampton Boat Show will take place on and adjacent to Mayflower Park, River Test from **15<sup>th</sup> to 24<sup>th</sup> September 2017 inclusive**. The Boat Show marina complex will be used to berth display craft between 15th and 24th September and will be floodlit at night.

Mariners are requested to remain at least 50 metres clear at all times and to reduce speed, as safe navigation permits, when passing the marina complex.

Mariners are advised that the front beacon of the Middle Swinging Ground transit has been removed for the period of the Boat Show and will be re-instated in early October 2017.

#### **Events at the Show**

There will be considerable activity, in general in the vicinity of the marina complex throughout the Boat Show period. Additionally, specific events will include:

Sunday 17<sup>th</sup> September – 0900 - 1600 – RYA Youth RIB Championships – National Final 2017. Two small RIBS will be used over a short course close off 101 Berth.

Sunday 17<sup>th</sup> September - 1430 - 1600 – 'Battle of the Classes' Dinghy Pursuit Race. 40 dinghies of different classes will participate in a pursuit race around a short course in the main navigation channel off the marina complex. The slower dinghies will start first, with the faster boats starting later and, given handicaps, all should finish at about the same time.

#### **Exhibitor Demonstrations**

During the Show, two areas have been designated to allow exhibitors to demonstrate craft in excess of 6 knots (see chartlets on pages 4 and 5). These areas are only to be used during show hours i.e. 10:00hrs to 19:00hrs.

**Area 1:** For speeds of up to 25 knots and boats of up to 10 metres in length. The area is in the River Test, contained within the Marchwood Channel, and is marked on the eastern end by joining Mulberry Buoy to Cracknore Buoy and on the western end by a line joining temporary yellow buoys. The Marchwood Buoy and temporary yellow buoys mark the southern boundary. The temporary yellow buoys will be laid on or about Wednesday 13<sup>th</sup> September.

A marshal boat will be stationed at the entrance to this area. All demonstrators are required to report to this boat **before** entering the area.

**Area 2:** For speeds over 25 knots. The area is off the Netley Shore in the Hovercraft Testing Area, contained within an area bounded by the 4 Hovercraft buoys and Netley Buoy.

Any craft exceeding 6 knots, outside of these designated areas, north of a line joining Hythe Pier to Western Shelf Buoy, other than by special dispensation, will be in breach of Southampton Harbour Byelaws 2003 and will be liable to prosecution.

The show organisers will provide a security patrol boat, which will be in attendance to assist in ensuring exhibitors' compliance with the Harbour Master's Directions and Byelaws and this will maintain a listening watch on VHF Channel 12.

A temporary mooring will be laid for Harbour Master's launch 'Sentinel', close east of the marina, and throughout the Boat Show period she will either be patrolling in the vicinity of the marina and Middle Swinging Ground / Junction Channel areas or stationed on her mooring.

### **Directions and Byelaws**

Masters or persons in charge of vessels of any description being exhibited afloat at the Boat Show are advised of the following Harbour Master's Directions and Southampton Harbour Byelaws (2003):

1. Vessels are to be navigated to and from Boat Show pontoons in a safe and proper manner.
2. Vessels are not to make use of the main navigational fairway so as to obstruct or impede large commercial vessels, which can navigate only within such fairway. (It should be noted that large vessels bound to or from the Western Docks may be underway at a higher speed than is anticipated in order to maintain safe steerage).
3. Vessels are not to exceed a speed of 6 knots north of a line drawn from Hythe Pier to Weston Shelf Buoy. The exception to this is within the designated demonstration area off Marchwood (Area 1 as indicated on Page 4).
4. No Master or owner of a vessel shall knowingly cause or permit any person to navigate or attempt to navigate a vessel when unfit by reason of drink or drugs to do so.
5. No vessel shall navigate between the hours of sunset and sunrise without displaying the navigation lights prescribed by the International Regulations for Preventing Collisions at Sea (1972), as amended.
6. No person shall discharge distress flares, rockets or pyrotechnics, in any circumstances other than that for which they were intended. To do otherwise is an offence.
7. Vessels shall comply with the Southampton Harbour Byelaws 2003.
8. Vessels shall comply with the verbal directions of the Harbour Master's authorised assistants onboard Southampton Harbour Patrol craft (call signs 'SP' and 'Sentinel'), which will be maintaining a listening watch on VHF Channel 12.

## **Works on completion**

On completion of the Boat Show, works to disassemble the pontoon complex and to withdraw the piles are expected to last until end of November 2017.

This notice will be self-cancelling on 25<sup>th</sup> September 2017.

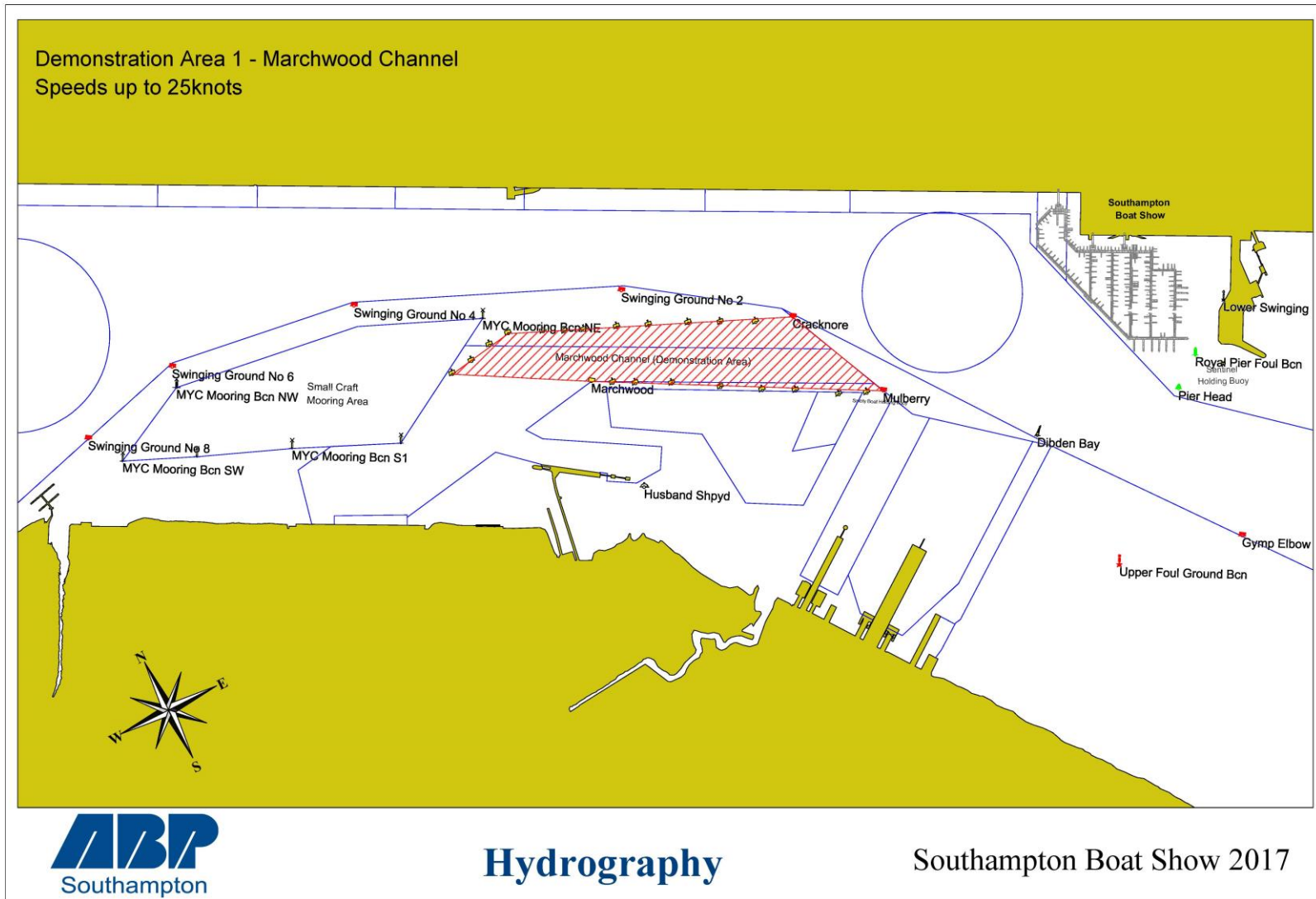
**Vessel Traffic Services Centre  
Ocean Gate, Atlantic Way  
Southampton**

**Captain M Phipps  
Harbour Master**

7<sup>th</sup> September 2017

**Owners, Agents, Charterers, Marinas, Yacht Clubs and Recreational Sailing  
Organisations should ensure that the contents of this Notice are made known to  
the masters or persons in charge of their vessels or craft.**

# No 33(T) of 2017, Southampton Boat Show, River Test 15<sup>th</sup> to 24<sup>th</sup> September 2017



# No 33(T) of 2017, Southampton Boat Show, River Test 15<sup>th</sup> to 24<sup>th</sup> September 2017

