

## **NOTICE TO MARINERS**

**No 58(T) of 2016**

**PORT OF SOUTHAMPTON - CENTRAL SOLENT –**  
**COWES-TORQUAY-COWES AND COWES-POOLE-COWES**  
**OFFSHORE POWERBOAT RACES - SUNDAY 4<sup>th</sup> SEPTEMBER**  
**2016**

**This notice is issued jointly with the Harbour Master Cowes to advise mariners** that the Cowes-Torquay-Cowes and Cowes-Poole-Cowes Powerboat Races will take place on Sunday 4<sup>th</sup> September 2016, times as below. Race Control will be at the Royal Yacht Squadron (RYS) and Race Officials will operate from there throughout the event. Up to 15 boats, 8 – 12m in length, are expected to take part in the Cowes-Torquay-Cowes Race and the faster race boats may approach speeds of 90 knots.

<u>Date</u>	<u>Race</u>	<u>Start</u>	<u>Finish (Approx)</u>
Sunday 4th September	Cowes -Torquay Race	0930	1045 - 1300
	Torquay - Cowes Race	1400	1530 - 1800
	Cowes-Poole-Cowes race	0945	10:45 - 1230

### **Practices**

There are no official practice sessions ahead of the races. However, competitors may test their boats in the Western Solent between 1400 and 1530 on Saturday 3<sup>rd</sup> September, subject to a maximum speed of 25 knots when transiting to/from the testing area.

### **Cowes-Torquay-Cowes Pre-Race Assembly and Start**

All competitors will depart Cowes Yacht Haven at approximately 0845 on Sunday 4<sup>th</sup> September 2016 and will parade at slow speed to the vicinity of Gurnard Buoy and will then make their way to the Race Muster Area (centred 2.8 cables north of Old Castle Point) by approximately 0920.

The Start Boat will go to the Muster Area at approximately 0920 and the fleet will form up in line abreast on the Start Boat's port quarter, remaining 30 metres astern at all times. The Race will use a rolling start. The Start Boat will lead the fleet on a course of 270° from the Muster Area, across the entrance of Cowes Harbour. The southern limit of the start run will be a notional line running due west to Snowden Buoy and to Gurnard Buoy, which must be left to port. The northern limit will be a notional line running due west through

Prince Consort Buoy and extending west to the longitude of Gurnard Buoy. The fleet will remain within the north and south boundaries of the start run at all times.

On crossing the RYS line, and if the course ahead is clear, the Start Boat will raise a green flag to signal the start of the race. The Race start line will be a north / south line through this position. Race boats are then free to accelerate to racing speed towards East Lepe buoy, the first mark of the course (see attached Chartlet 1), which must be left to port.

### **Finish Line**

All boats returning to Cowes from the Torquay-Cowes race will return up the Solent from the west and, to finish, will pass through a north / south line through Gurnard north cardinal buoy and a committee boat stationed 1 cable north of the buoy (see attached Chartlet 2).

**All boats will come off the plane once passed the finish line, turn to starboard and then proceed at approximately 6 knots to Cowes Yacht Haven.**

### **Cowes-Poole-Cowes Pre-Race Assembly and Start**

All competitors will depart Cowes Yacht Haven at approximately 0845 on Sunday 4<sup>th</sup> September 2016 and will parade at slow speed to the vicinity of Gurnard Buoy and will then make their way to the Race Muster Area (centred 2.8 cables north of Old Castle Point) by approximately 0935.

The Start Boat will go to the Muster Area at approximately 0935 and the fleet will form up in line abreast astern of the Start Boat, National race competitors on the port quarter, Club race competitors on the starboard quarter, remaining 30 metres astern at all times. The Race will use a rolling start. The Start Boat will lead the fleet on a course of 270° from the Muster Area, across the entrance of Cowes Harbour. The southern limit of the start run will be a notional line running due west to Snowden Buoy and to Gurnard Buoy, which must be left to port. The northern limit will be a notional line running due west through Prince Consort Buoy and extending west to the longitude of Gurnard Buoy. The fleet will remain within the north and south boundaries of the start run at all times.

On crossing the RYS line, and if the course ahead is clear, the Start Boat will raise a green flag to signal the start of the race. The Race start line will be a north / south line through this position. Race boats are then free to accelerate to racing speed towards East Lepe buoy, the first mark of the course (see attached Chartlet 3), which must be left to port.

### **Finish Line**

All boats finishing the race will return up the Solent from the west and, to finish, will pass through a north / south line through Gurnard north cardinal buoy and a committee boat stationed 1 cable north of the buoy (see attached Chartlet 4).

**All boats will come off the plane once passed the finish line, turn to starboard and then proceed at approximately 6 knots to the Cowes Yacht Haven.**

### **Spectator Craft**

These are high-speed races taking place on a potentially busy summer Sunday and, in the interests of safety, all craft not participating in the event are advised to keep well

clear of the start and finish areas. All vessels should proceed with caution and keep a good look out whilst navigating in or near the areas of racing.

### **Race Marshal Patrol Boats**

Race Marshals will patrol the area between the Muster Area and Gurnard Buoy for both starts. For the finishes, the area between the finish line and Cowes Harbour entrance will be patrolled by Race Marshals to ensure that the race boats are off the plane once over the line and at less than 6 knots before passing south and east of the Gurnard Buoy.

### **NOTE:**

**The International Regulations for the Prevention of Collisions at Sea (1972), as amended, will take precedence over all other considerations at all times.**

This notice will be self-cancelling on 5<sup>th</sup> September 2016.

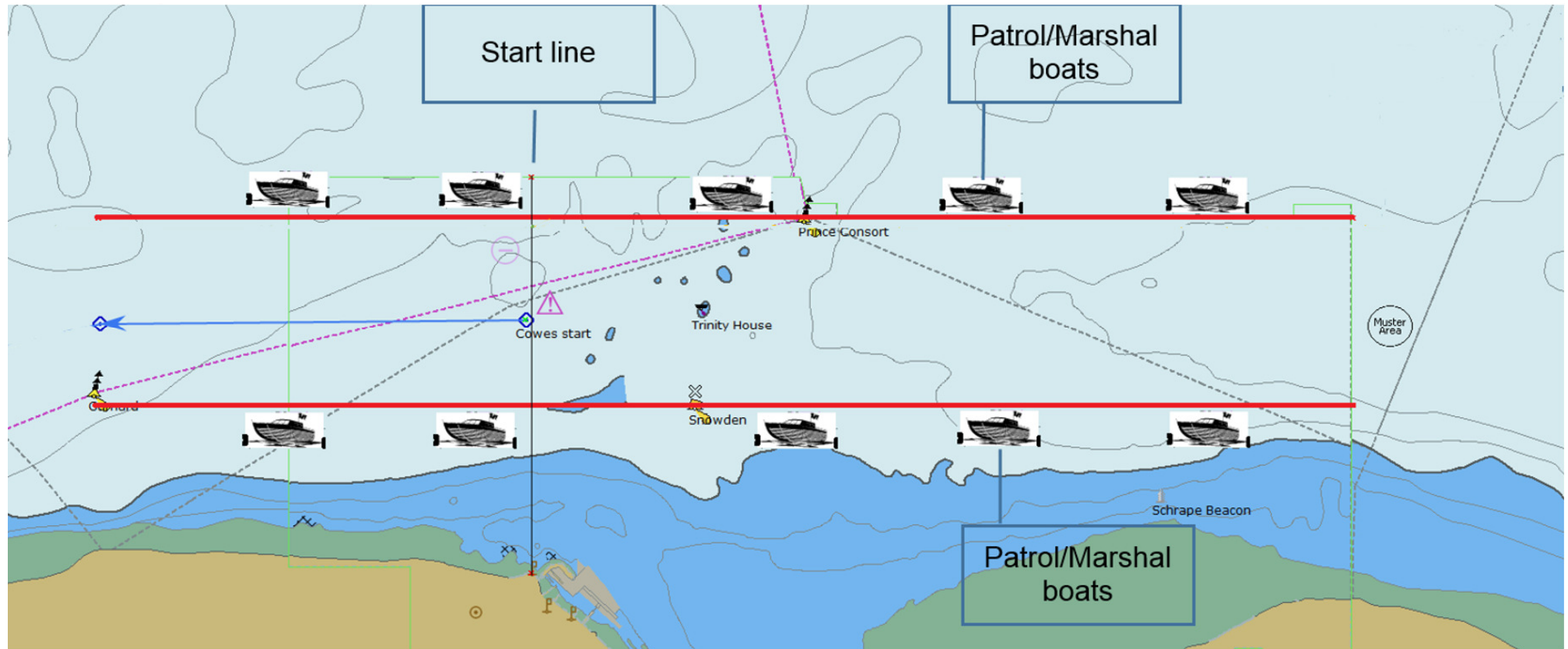
**Vessel Traffic Services Centre  
Berth 37, Eastern Docks  
Southampton**

**Captain M Phipps  
Harbour Master**

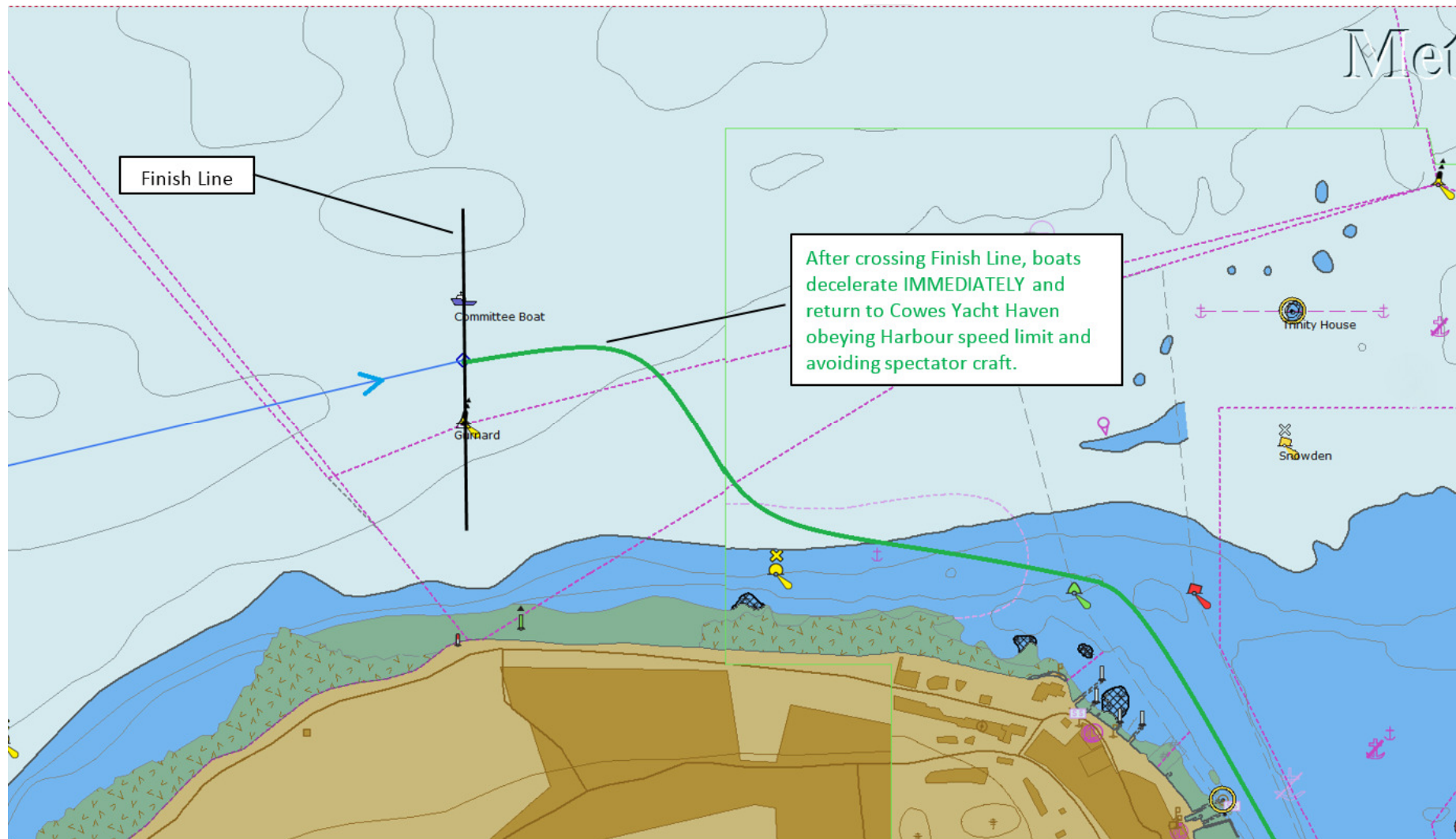
26<sup>th</sup> August 2016

***Owners, Agents, Charterers, Marinas, Yacht Clubs and Recreational Sailing Organisations should ensure that the contents of this Notice are made known to the masters or persons in charge of their vessels or craft.***

## Chartlet 1 Cowes to Torquay Race Muster and Start Run – Start at 0930

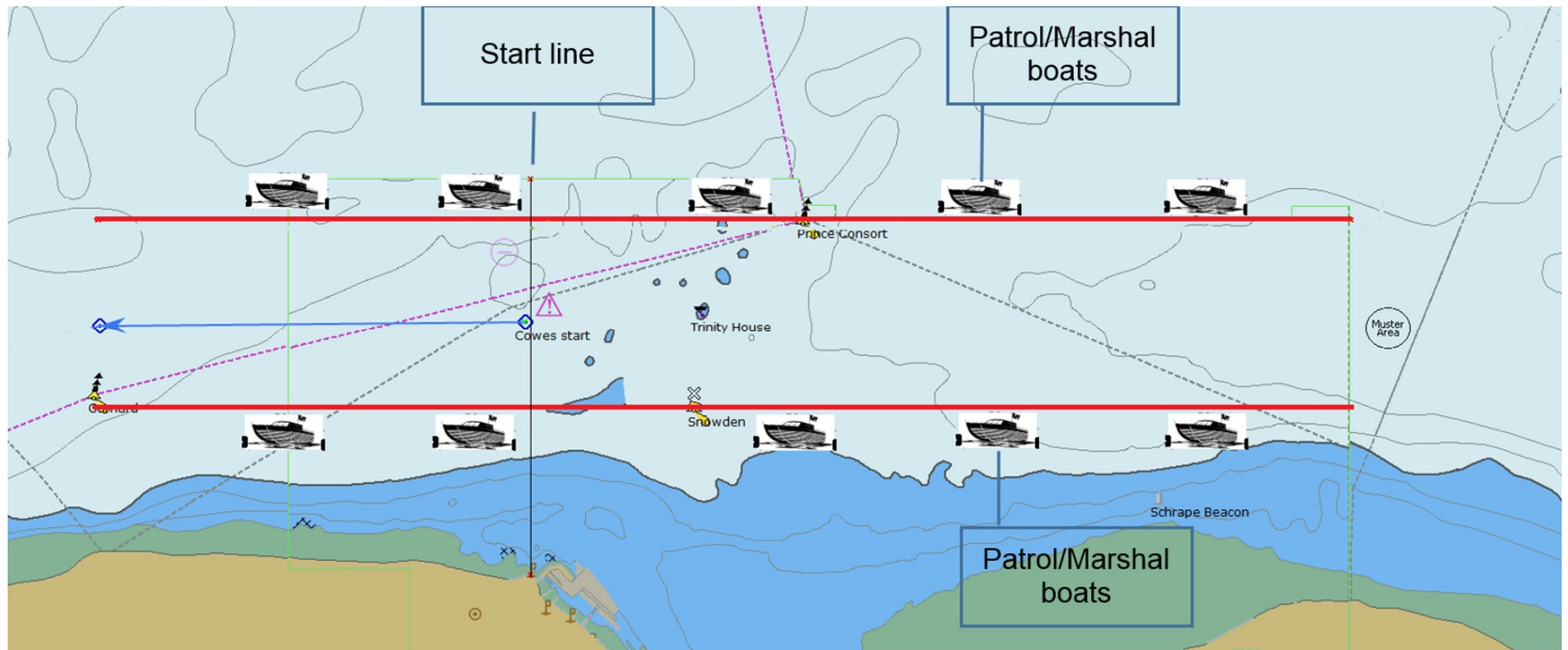


## Chartlet 2 Torquay to Cowes Race Finish – 1515 to 1800





## Chartlet 3 Cowes-Poole-Cowes Race Muster and Start Run – Start at 0945



## Chartlet 4 Cowes-Poole-Cowes Race Finish – 1045 to 1300

