

NOTICE TO MARINERS

No 57(T) of 2016

Port of Southampton – Central Solent -

Etchells European Championships

28th to 30th August 2016 and

Etchells World Championships 2016 –

4th to 10th September 2016

THIS NOTICE IS ISSUED JOINTLY WITH THE QUEEN'S HARBOUR MASTER PORTSMOUTH to advise mariners that the Etchells European Championships will be held in The Central Solent between Sunday 28th and Tuesday 30th August 2016, followed by the Etchells World Championships between Sunday 4th and Saturday 10th September 2016. Participants in both events are International Etchells Class Yachts, which are 10 metre day boats with a crew of 3 or 4. It is expected that 40 to 45 yachts will participate in the European Championships and 50 to 60 yachts in the World Championships.

The Organising Authority for both events is the Royal London Yacht Club, based at Cowes Yacht Haven.

Both events will be held over courses in The Central Solent, the race area being east of the Bramble Pile, west of Gilkicker Point, north of a line between East Bramble and South Bramble Buoys and south of Calshot – as shown on the chartlet below. The race courses will consist of windward / leeward legs of 1.5 to 2 miles long crossing The North Channel. Weather allowing, racing will take place on and between the above dates between 1030BST and 1700BST daily.

The yachts participating in the events will be based in Cowes over the period and, not having engines, will sail to and from the race area daily. All participating yachts will carry at least one marine band VHF radio to report retirement or to request assistance only. A number of committee vessels, mark boats and coach and support RIBs will be available to assist the yachts when required and they may be taken in tow in calm conditions.

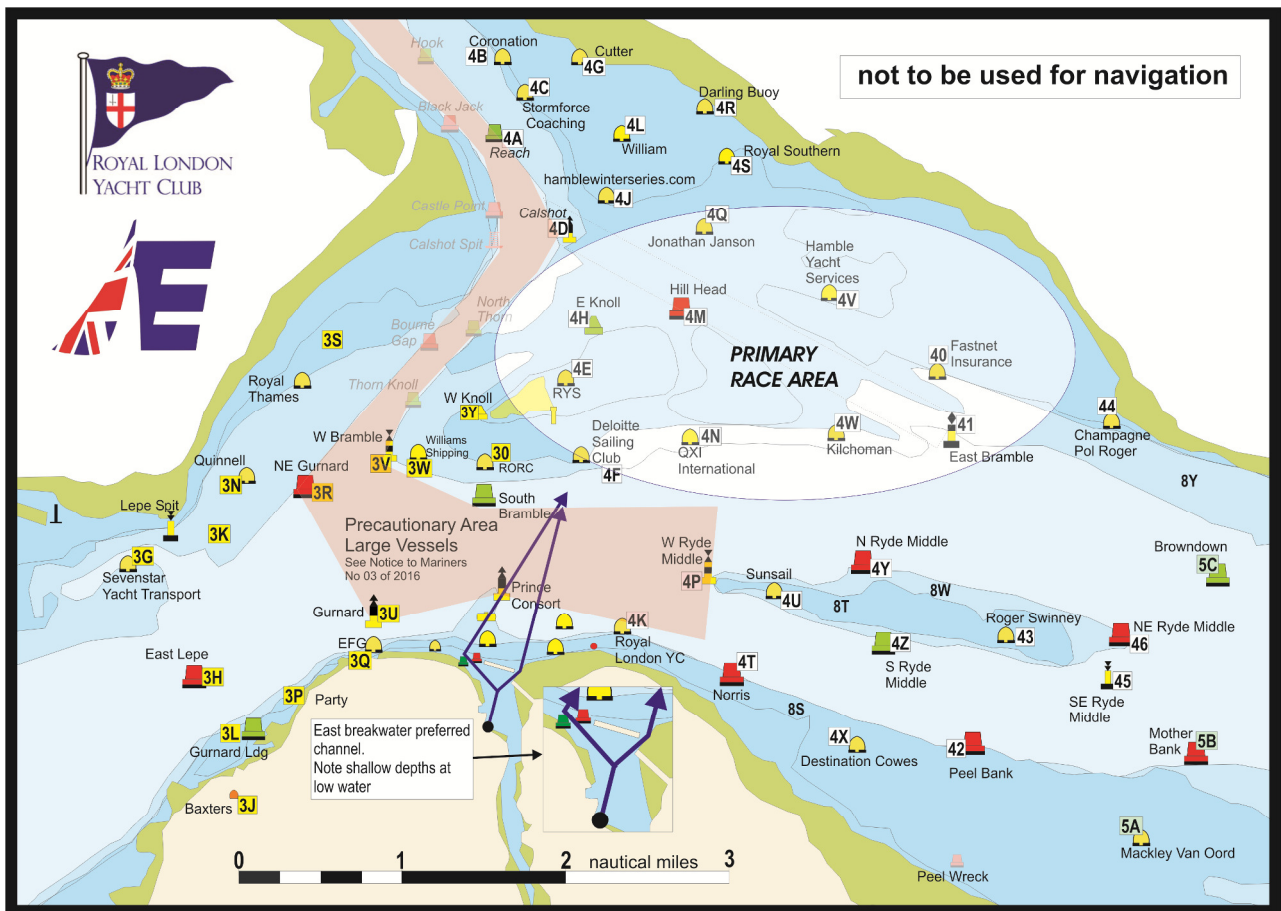
Mariners are specifically requested and advised to avoid using The North Channel inbound to or outbound from Southampton Water between 1030 and 1700 daily over the two race periods, as races will be taking place across the line of The Channel at all times.

Mariners should be particularly vigilant and should maintain an efficient lookout for large vessels and sailing vessels and, at all times, should navigate with extreme caution in the area.

Further information on the progress of racing daily may be sought from Southampton VTS on VHF Ch 12.

This notice will be self-canceling on 11th September 2016.

The Race Area



**Vessel Traffic Services Centre
Berth 37, Eastern Docks
Southampton**

**Captain M Phipps
Harbour Master**

22nd August 2016

Owners, Agents, Charterers, Marinas, Yacht Clubs and Recreational Sailing Organisations should ensure that the contents of this Notice are made known to the masters or persons in charge of their vessels or craft.